

USB Restore Key with Extending the Drive

Simply **NUC**

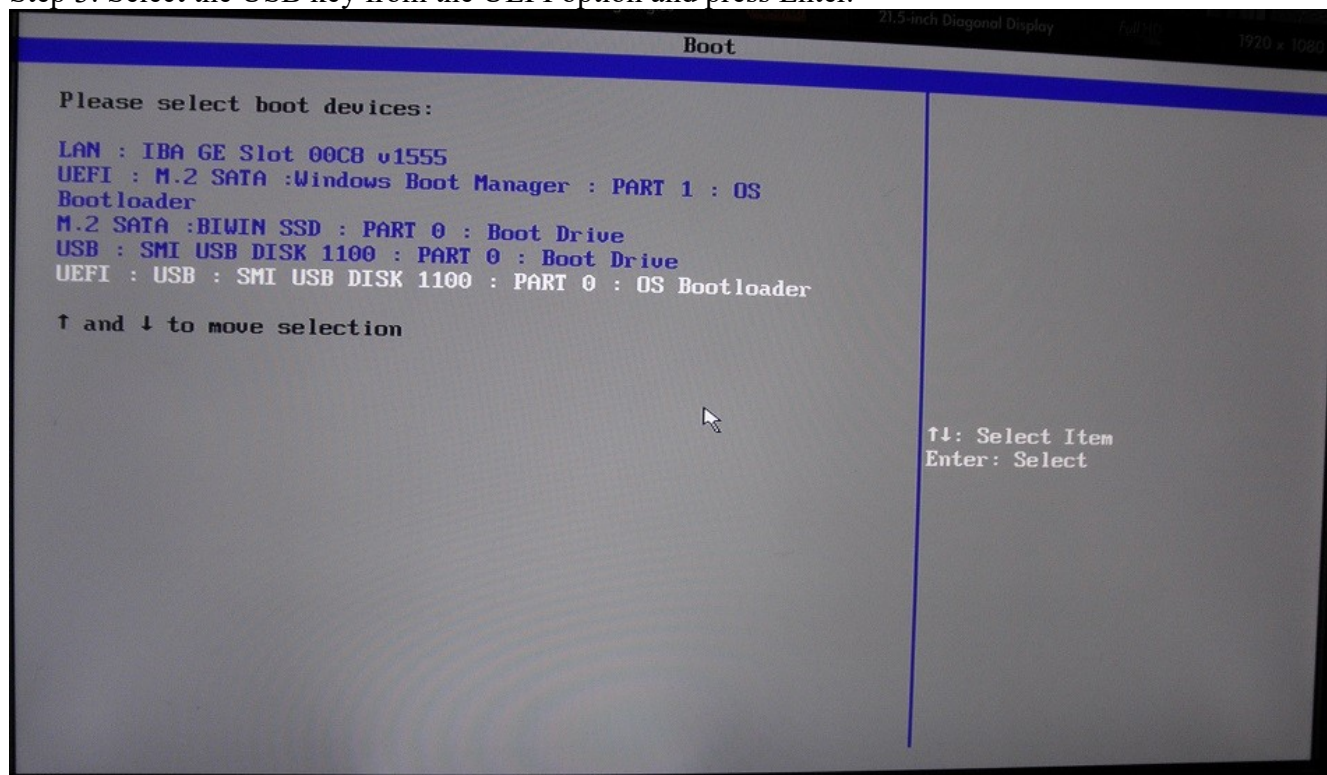
Revision 1.1

Non-Confidential

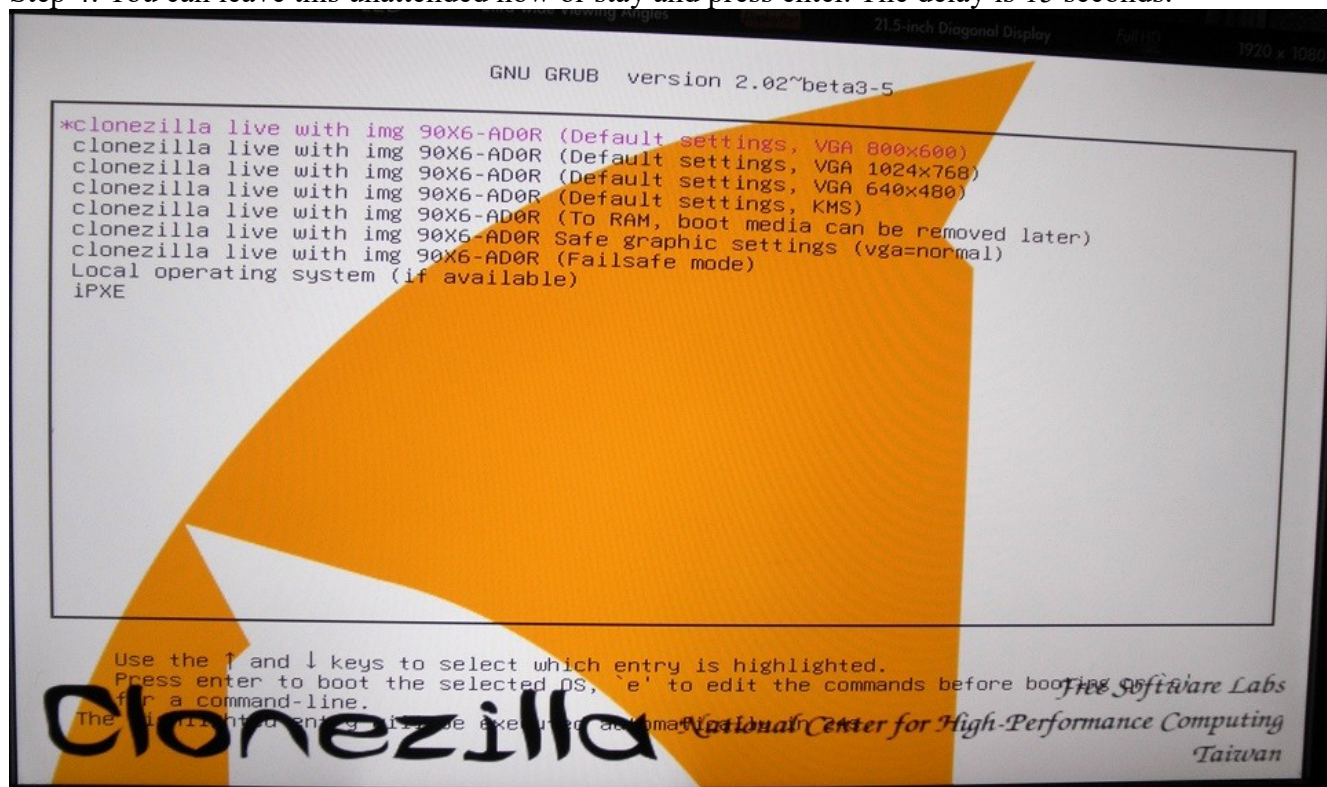
Step 1: Insert USB Key into the NUC while powered off.

Step 2: Turn on unit and press F10 to boot override.

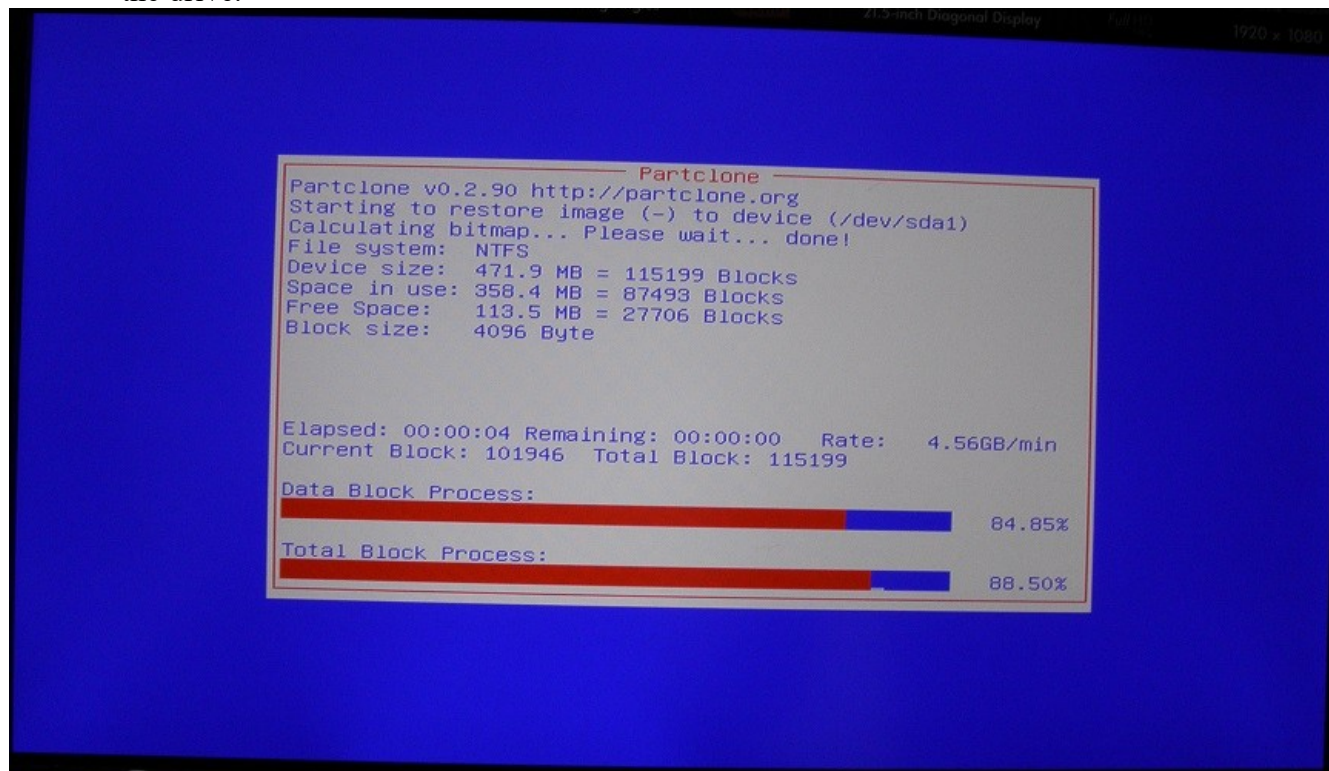
Step 3: Select the USB key from the UEFI option and press Enter.



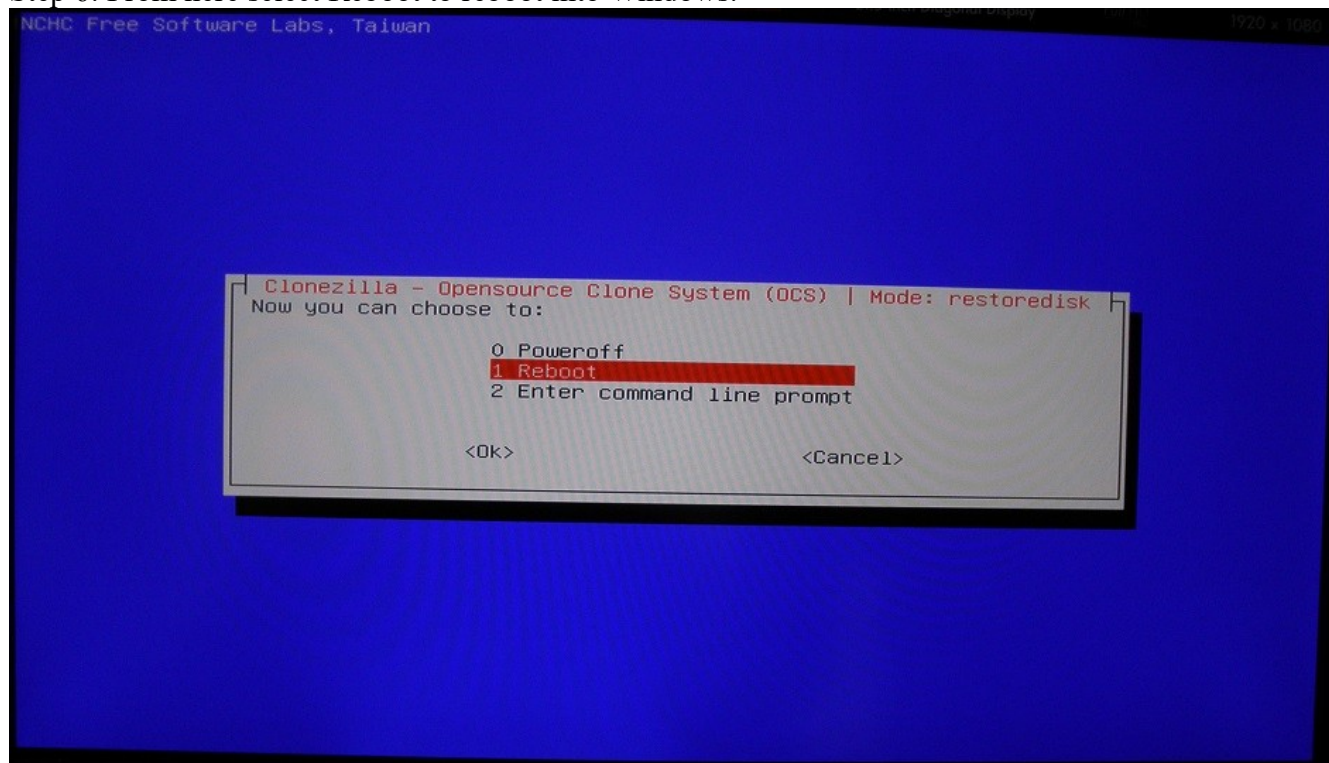
Step 4: You can leave this unattended now or stay and press enter. The delay is 15 seconds.



Step 5: This process does not require your attention. This screen is to show the progress of overwriting the drive.

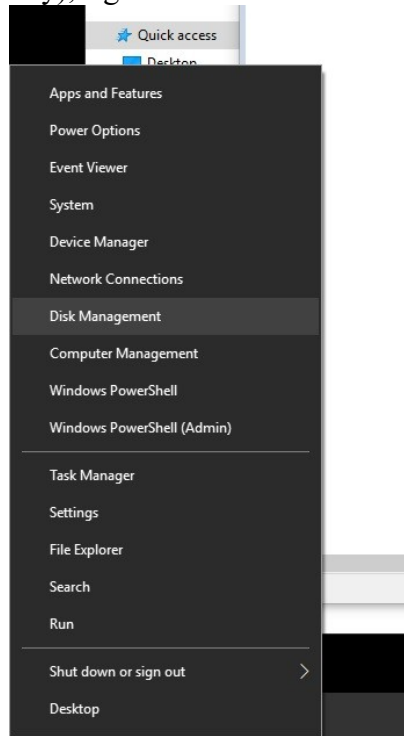


Step 6: From here select Reboot to reboot into Windows.

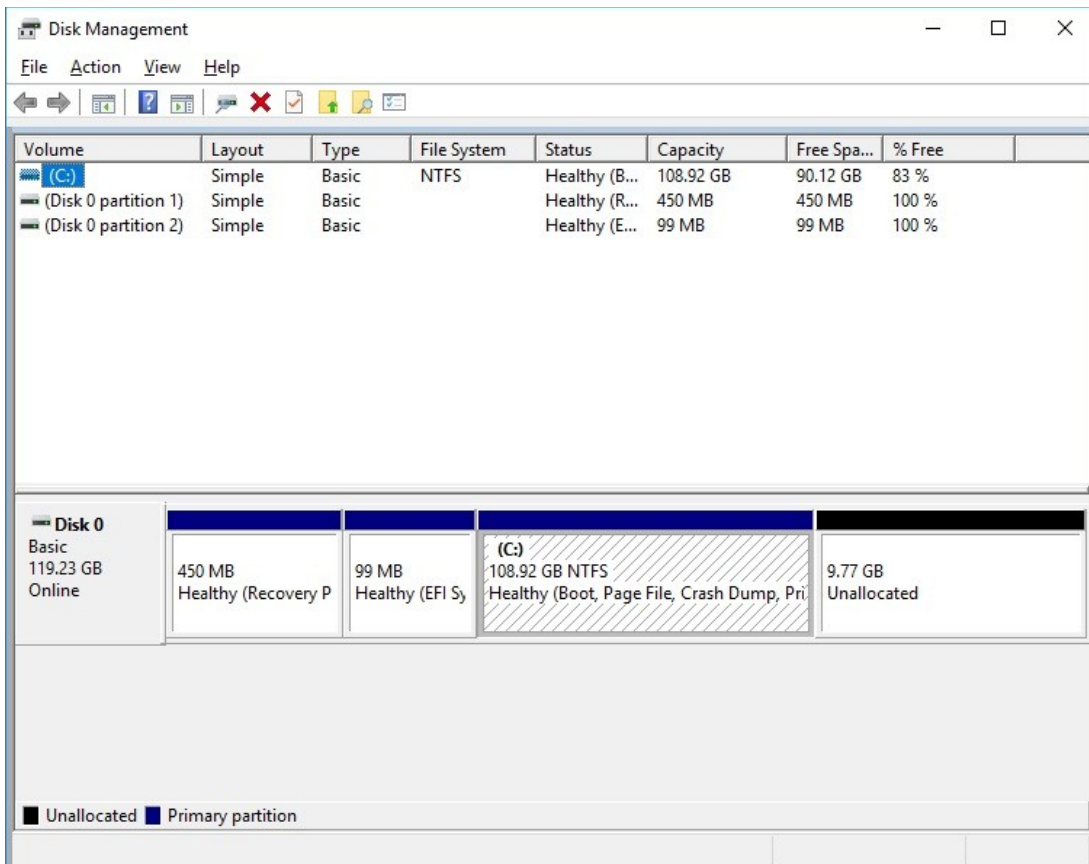


From here there will be a countdown and then a message to remove the USB drive. It states "Please remove the live-medium, close the tray (if any), and press ENTER to continue:_" If ENTER is pressed and it takes too long, simply press the power button until the unit is off.

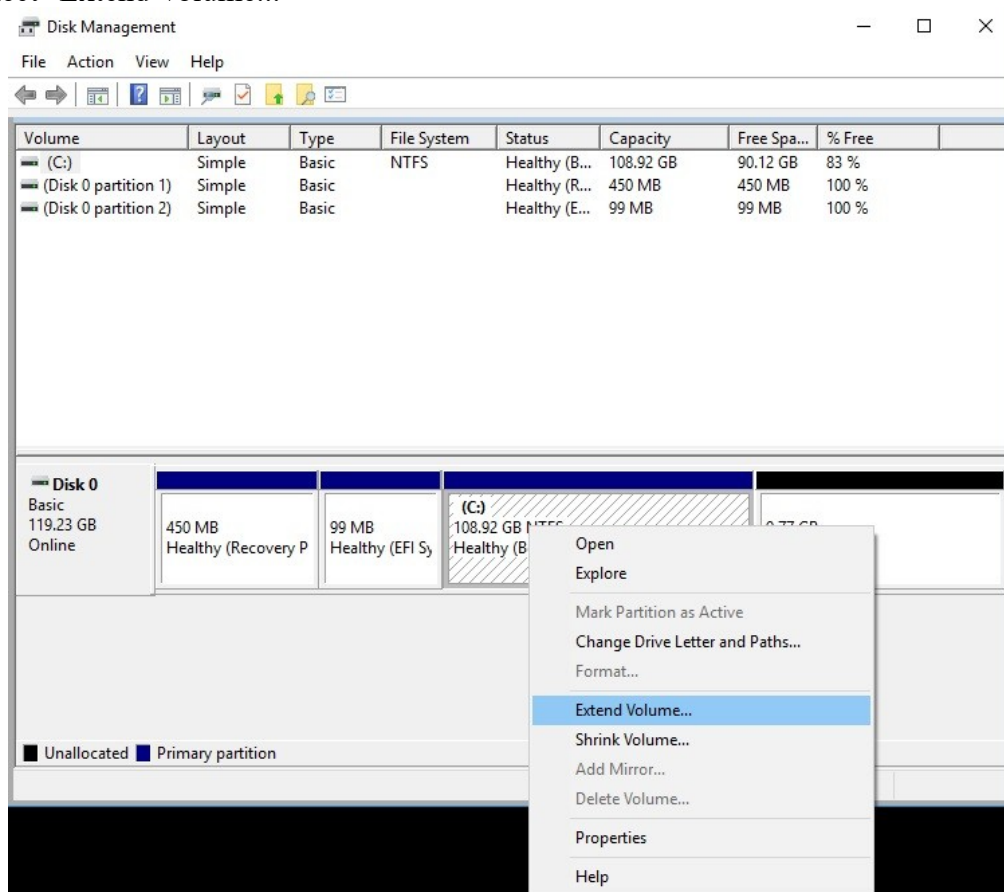
Step 7: After the Windows Intro (if any), right-click on the Start Menu and select Disk Management.



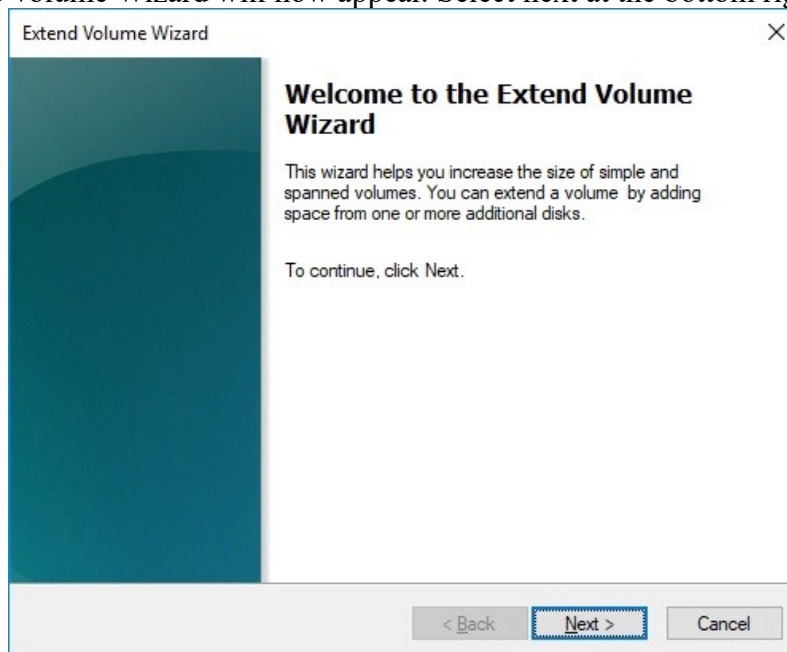
Step 8: Once the Disk Management window opens, locate the black highlighted box that says Unallocated inside.



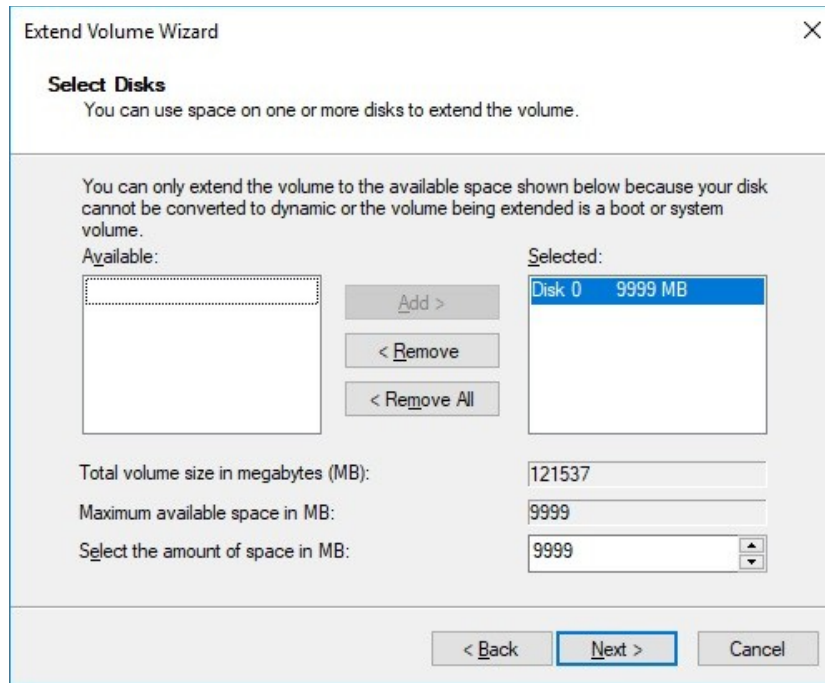
Step 9: Next is to right-click inside the box directly to the left of the "Unallocated Box"
Select "Extend Volume..."



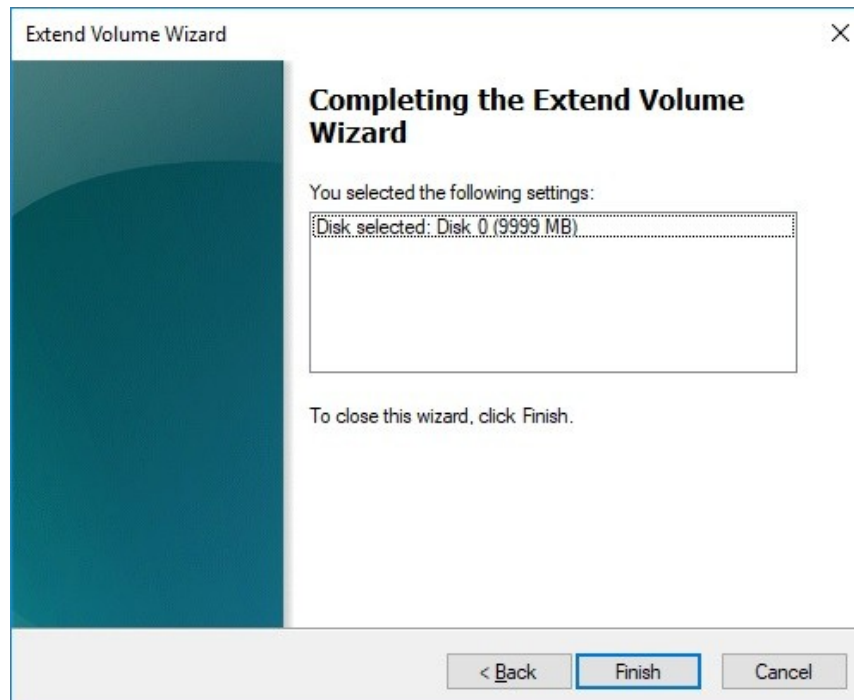
Step 10: The Extend Volume Wizard will now appear. Select next at the bottom right.



Step 11: The next screen is automated for selecting the rest of the drive. You can simply click Next again.



Step 12: The Wizard will show an overview of all changes that will be made. Click Finish to finalize changes.



You now should not have an "Unallocated" box and have all drive space available.

The screenshot shows the Windows Disk Management console. At the top, a table lists the volumes on Disk 0:

Volume	Layout	Type	File System	Status	Capacity	Free Spa...	% Free
(C:)	Simple	Basic	NTFS	Healthy (B...	118.69 GB	99.88 GB	84 %
(Disk 0 partition 1)	Simple	Basic		Healthy (R...	450 MB	450 MB	100 %
(Disk 0 partition 2)	Simple	Basic		Healthy (E...	99 MB	99 MB	100 %

Below the table, the details for Disk 0 are shown:

Disk 0	450 MB	99 MB	(C:)
Basic 119.23 GB Online	Healthy (Recovery Partition)	Healthy (EFI System P	118.69 GB NTFS Healthy (Boot, Page File, Crash Dump, Primary Partition)

At the bottom, a legend indicates that black represents Unallocated space and blue represents Primary partition. The main area of the disk is currently empty, indicating no unallocated space.

In rare occasions you will still have an "Unallocated" box still after the expansion. Repeat from step 9 again under these circumstances.